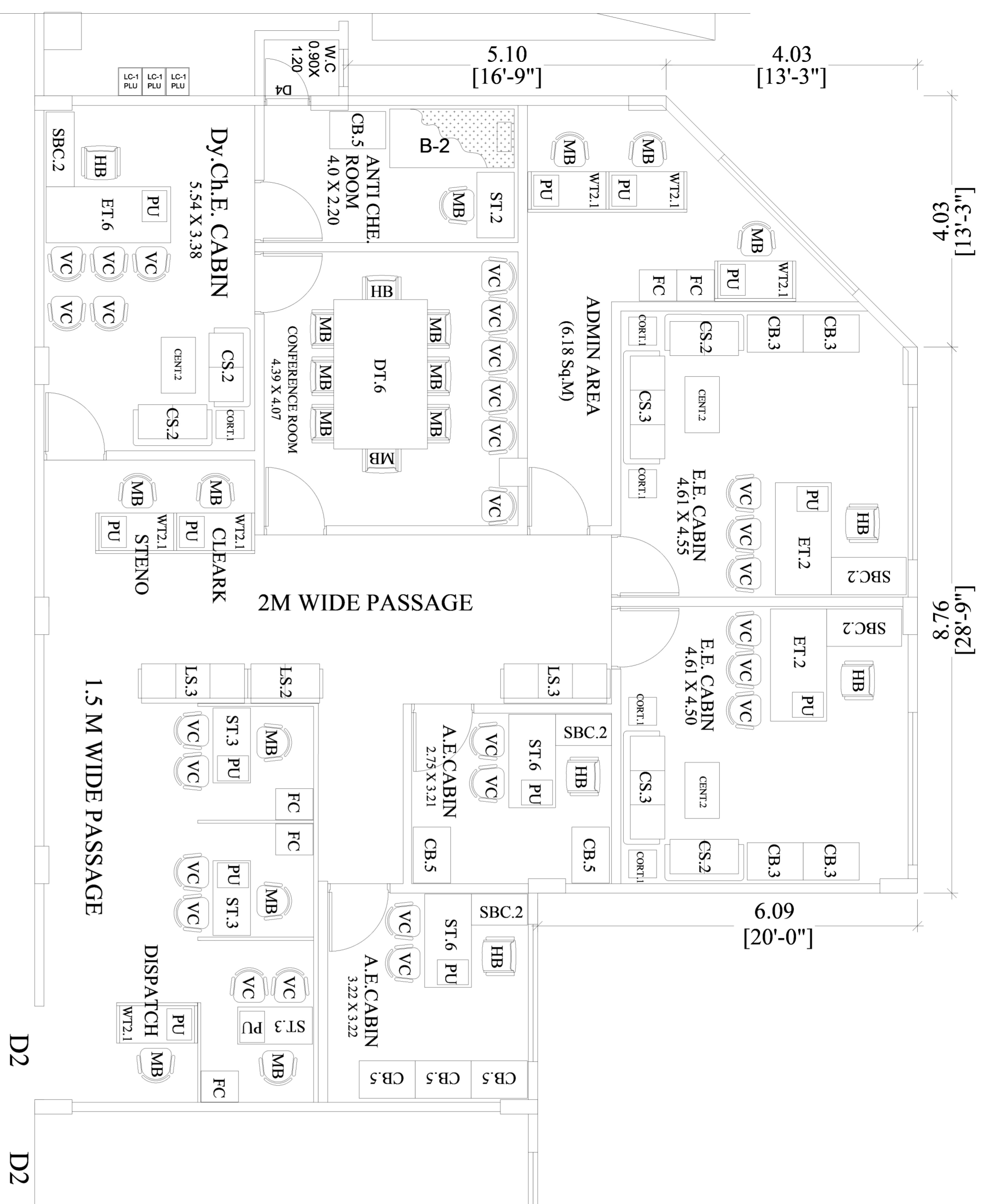




4.04 WIDE PASSAGE

D2



2M WIDE PASSAGE

D2

D2

- Space allocation :
- Dy.Ch.E = 01
  - Ex. Eng. = 02
  - Ass. Eng. = 05
  - Sub. Eng = 23
  - Admin. Staff = 03
  - Cleark + Steno. = 02
  - Dispatch = 01
  - Conference Room = 01
  - Store Room = 01

**USER REMARK**

This is to certify that thwe scope of wok has been Explained to me by M.A. and considering the Budget Provision, therefore I am satisfied with the project proposal.

Sd/-  
Dy.Ch.E. (HIC)

**BRIHANMUMBAI MAHANAGARPALIKA**

Planning of HIC (W/S) office in block no B 101 & B 102 in Godown Bldg on land bearing CTS no. 485 / A to D, 487, 490 B 610, 616 / A to D, 617 / A to G, 620, 622, 626, 630, 652 & 653 f village poisar at Kandivali (E) in R/Central ward.

WARD :R/C

Sd/- S.E.(ARCH).W.S.      Sd/- SR. ARCH.W.S.      Sd/- DY. MA (W.S.) i/c      Sd/- MUNICIPAL ARCHITECT